



ZEILFELDER
PUMPEN

Typical Solutions



Rotary Lobe/ Gear Pumps

Up to:

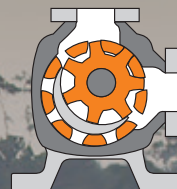
120 bar

450°C

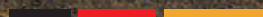
η =**92%**

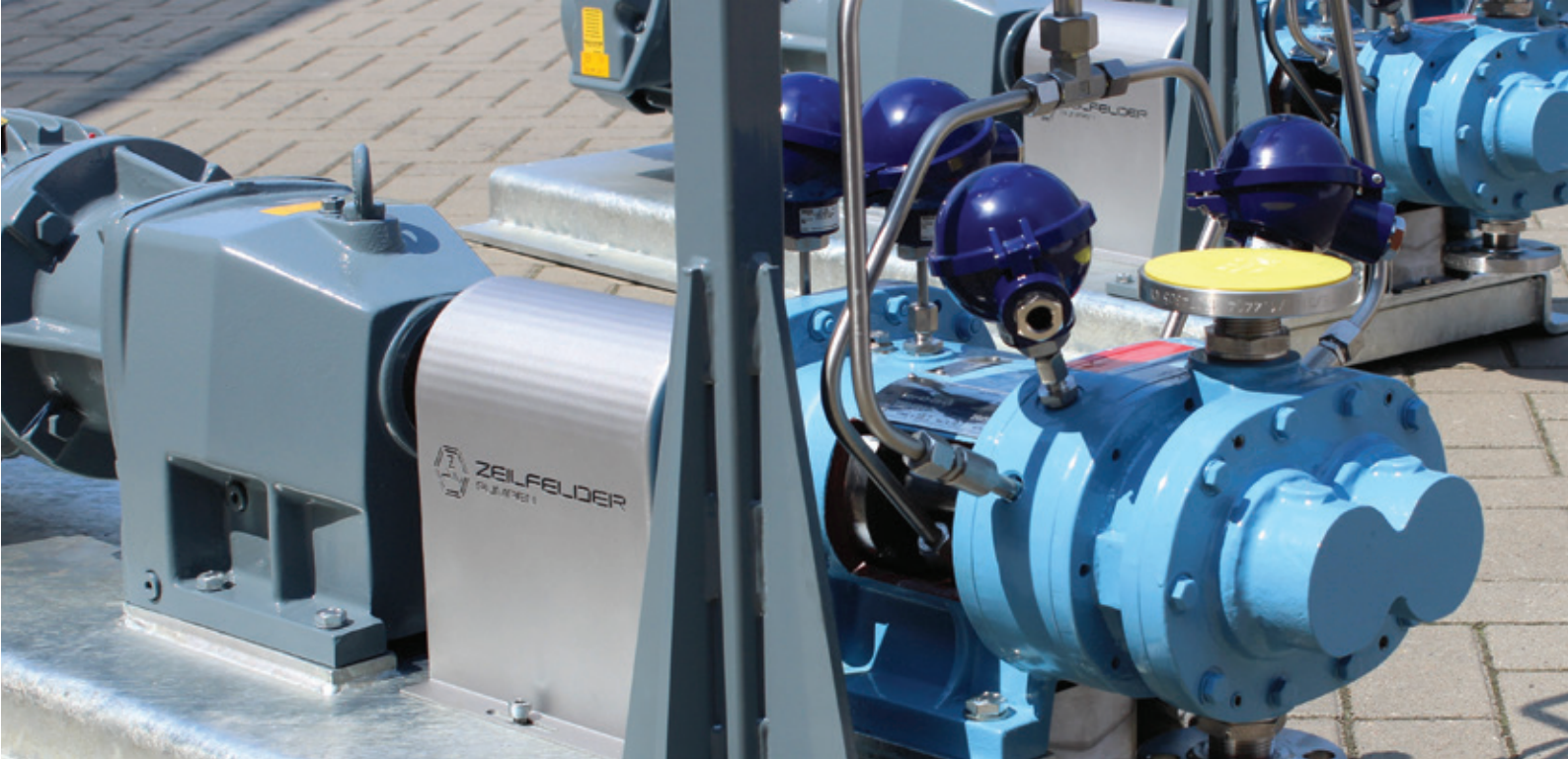
3,400,000 mPas

API, TA-Luft,
ATEX and TR CU
certifications



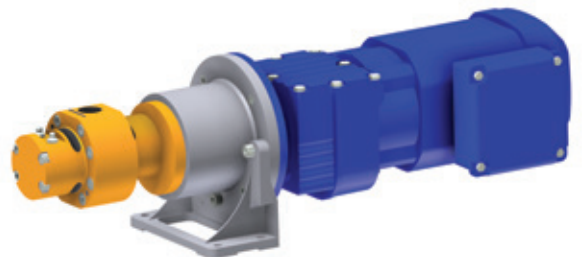
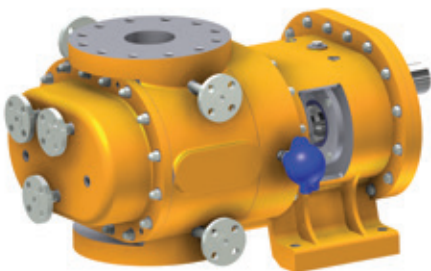
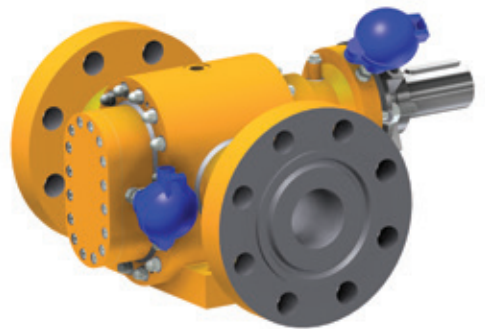
made in Germany





CUSTOM SOLUTIONS FOR EXTREME APPLICATIONS

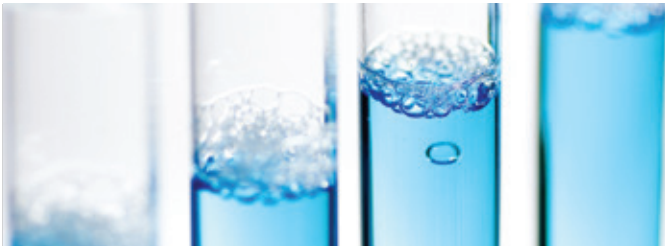
We provide custom solutions for extreme applications and pride ourselves on being able to produce pumps individually designed to solve your specific problem. Our team of engineers is ready to work with you on a design based on your requirements. We have seen almost every application in our 90+ years of business and are positive that we can provide you a custom-built solution.



INDUSTRIES

We produce gear pumps and rotary lobe pumps for almost every application; API pumps for the petrochemical industry, CIP pumps, hermetically sealed pumps, high pressure pumps for extreme applications, explosion proof pumps for dangerous applications and many more. Our pumps have proven their quality and efficiency for over 90 years in the following industries:

CHEMICAL



In addition to our conventional pump range, special and custom pumps are available built out of special materials with high performance coatings, heating and cooling jackets and special sensor requirements.

PETROCHEMICAL



We offer API self-priming rotary lobe and gear pumps with API 682 seals according to ATEX, TA-Luft, GOST-R and TR CU to deliver crude oil and all types of bitumen including those containing solids.

PHARMACEUTICAL



To respond to the requirements of the pharmaceutical industry we have designed pumps with reduced surface roughness down to 4μ , CIP (cleaning in place) design and aseptic connections.

FIBER



We offer pumps with high system pressure and high dosing precision (optional with heating jacket) to deliver synthetic fibers, finishing agents, paints with pigments and dyestuffs.

AUTOMOTIVE



Our pumps deliver solid emulsion and drilling liquids containing aluminium swarf and chips as well as wax, glue, paint containing solid color pigments and nanoparticles in accordance with the requirements of the automotive industry.

REGENERATIVE / ENERGY



Our heavy duty pumps are designed to deliver biomass, liquid manure and silage in biogas plants at high temperatures and with high solids loading. Our pumps are also used in nuclear plants to deliver highly concentrated acids.

SHIPPING



We offer maritime-grade pumps for offshore applications to deliver heavy oil and machine lube oil. We also offer rotary lobe pumps to load and unload liquid chemicals, oil and bitumens with solids.

BUILDING



Our pumps deliver primary materials, protective agents, white cement, glue, silicone, waste water and filled bitumen for the building industry. For high temperature applications, or outside installations, heating jackets are available.

FOOD AND CANDY



Our stainless steel CIP rotary lobe pumps are in FDA compliant materials and are particular suitable for the meat and animal feed industry. We also offer special lobes to avoid caramelization on sugar based products as chocolate.

BITUMEN



We offer special low-speed rotary lobe pumps with heating jackets to deliver bitumen and filled bitumen under working temperatures up to 450°C. These low-wear pumps are long lasting due to low speed and high material hardness.

ABRASIVE SOLIDS



Our rotary lobe pumps are specially designed to pump liquids with high concentration of solid particles or abrasive products as well as cooling lubricants with cuttings.

METALLURGY



Rotary lobe and gear pumps with heating jackets are used for furan resins, refractory finishings, mercury, gallium, zinc alloy and stibium alloys up to 450°C including various molten metals with fully ceramic pumps.



**ZEILFELDER
PUMPEN**

A BRAND OF
**ASM
DIMATEC**



Headquarters

ASM DIMATEC GmbH
Department: Zeilfelder Pumpen
Lehmkuhlenfeld 2
38444 Wolfsburg
Germany

T: +49 (5308) 69 38 0
F: +49 (5308) 69 38 118
E: info@zeilfelder-pumpen.com
W: www.zeilfelder-pumpen.com

made in Germany

ASM DIMATEC reserves the right to make changes at any time without prior notification.

Represented by:

